


---

---

---

---

---

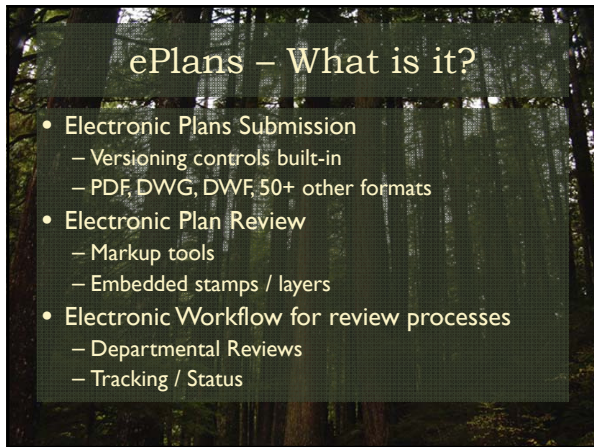
---

---

---

---

---




---

---

---

---

---

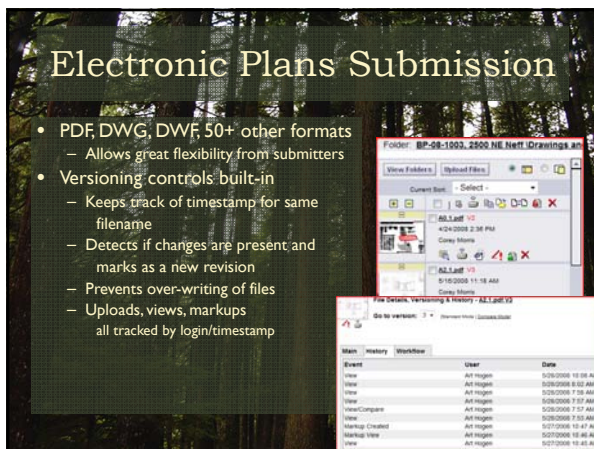
---

---

---

---

---




---

---

---

---

---

---

---


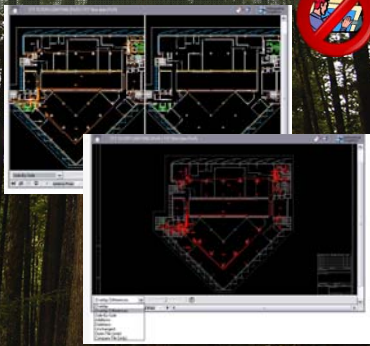
---

---

---

### Electronic Plan Review

You can perform a graphical comparison of two file versions. A variety of options are available from the toolbar including side by side view and overlay differences, where deleted geometry displays red, while added geometry is green. Unchanged areas are grey. An alignment tool and transparency slider are available.



---

---

---

---

---


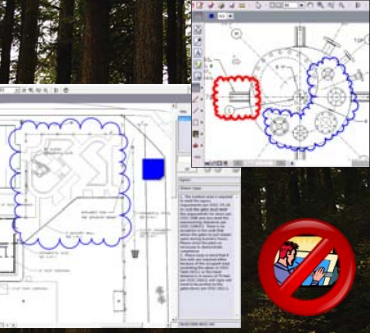
---

---

---

### Electronic Plan Review

Reviewers are easily able to make notes or revision requests with the built-in Markup tools, then send notice to the Submitter to come view their corrections online and upload their own revised drawings.



---

---

---

---

---

---


---

---

### Reviewing Plans

Reviews are done on dual-screen PCs with one normal screen for reading emails, referencing codes, etc. and a larger screen for the plan "sheets."

A 30-inch monitor is an AMAZING motivator for workers to adopt Electronic Review processes.



---

---

---

---

---

---

---

---

## Review Process Workflow

Reviewers from each Department have rights to view others' notes and review status, but can change only their own.

Departmental Reviewers can link directly to their corrections for the Project.

The Submitter gets this same form with direct links to the pages needing revision.

The Routing Slip shows the progress and can be viewed by anyone involved in the workflow.

---

---

---

---

---

---

---

---

---

---

---

---

## Final Approval

Once reviewed, the Plans Examiner "Batch Stamps" the plans and publishes them to the 'Finals' folder in the Project.

All markups and stamps are embedded in a PDF file for security.

When the Project is complete, the Submitter is given access to download and print from the 'Finals' folder.

---

---

---

---

---

---

---

---

---

---

---

---

## Field Inspections

In case there's any doubt of the field set's authenticity, or if a given plan sheet is missing or damaged, Inspectors can use ePlans to view the approved plan sets.

This is a huge time savings over rescheduling an inspection.

---

---

---

---

---

---

---

---

---

---

---

---



### ePlans is not the Future... it's NOW!

- Planning Division:
  - Land Use Applications
- PUW Engineering:
  - Right-of-Way Permits
  - Construction Drawings & Fire Flow
- GIS integration
- Access to local Public Safety staff
  - Fire & Rescue, Police emergencies
- Economic Development
  - Faster reviews, permits, occupancy, return on investments

---

---

---

---


---

---

---

---

### Paper Plan Submittals



All plans are now submitted electronically. If paper is submitted, they are scanned in and still run through the review process electronically.

We are beginning to archive prior Paper Plans as well, in an effort to eliminate costly off-site storage.

---

---

---

---

---

---

---

---

### Challenges We've Overcome

- Interface to current Building Permits database
  - Currently, a read-only process for our system
- Submittal requirements (Orientation, naming, etc.)
- Restructuring paper processes to electronic
- Legality of electronic documentation (wet signatures)
- Copy protection of approved plans
- Resistance to electronic process
- Providing documentation/support to public users

---

---

---

---

---

---

---

---

## Advantages

- Fast, efficient way to provide plans submittals, reviews, and permit issuance
- Allows for submittals worldwide without leaving your office
- Eliminates paper waste (GREEN!)
- Ensures authenticity of altered documents
- Maintains consistent revision history
- Customizable eForms & Workflows
- Allows self-serve access to submitters' own plans while securing others' access
- Archiving

---

---

---

---

---

---

---

---

---

---

## Recent Clients

Client:	Submitted from:	Notes:
Kohl's	Washington & Minnesota	LEED certified facility
Olive Garden	Florida	Used Electronic on site
Les Schwab Tires	Portland, OR	National Headquarters
Jack in the Box	San Diego, CA	1 <sup>st</sup> national chain to submit
Toyota Dealership	Locally	Designed to LEED specs
St Charles Hospital	Mostly Local	Multiple TI's
Deschutes County Public Safety Complex	Boise, ID	39,000 Sq Ft Facility with 24-kw Roof Solar Array
Central Oregon Community College	Portland, OR	\$50 Million in projects
Bend Broadband	California	\$30 Million regional datacenter
La Grande School Dist.	Boise, ID	3 <sup>rd</sup> party review of new Elementary School
Walmart Expansion	Dallas, TX	60,000 SF addition – First electronic submittal

---

---

---

---

---

---

---

---

---

---

Since 2008  
 Bend, Oregon issued  
**7,721** Building Permits  
 Here's What  
**ePlans**  
 Has Saved  
**Our Customers**

---

---

---

---

---

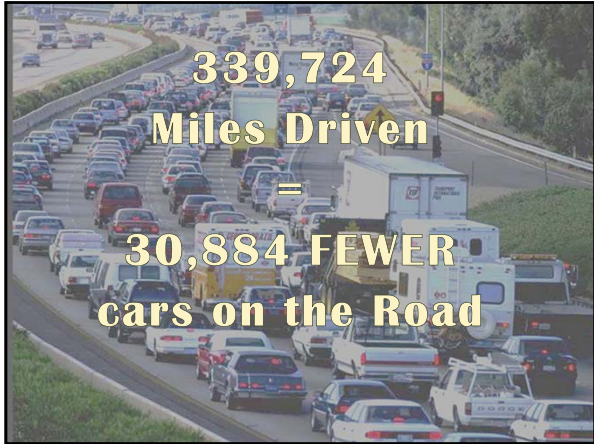
---

---

---

---

---



---

---

---

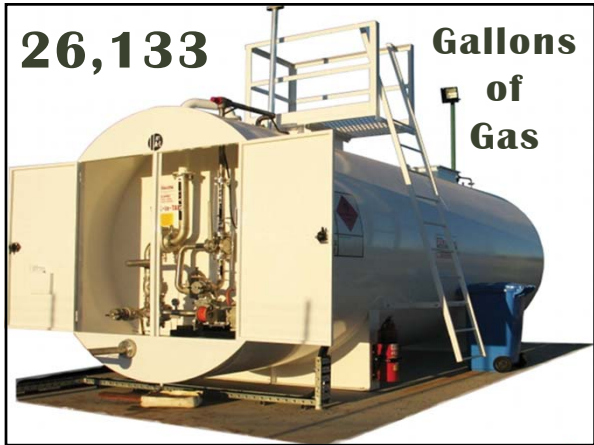
---

---

---

---

---



---

---

---

---

---

---

---

---



---

---

---

---

---

---

---

---





---

---

---

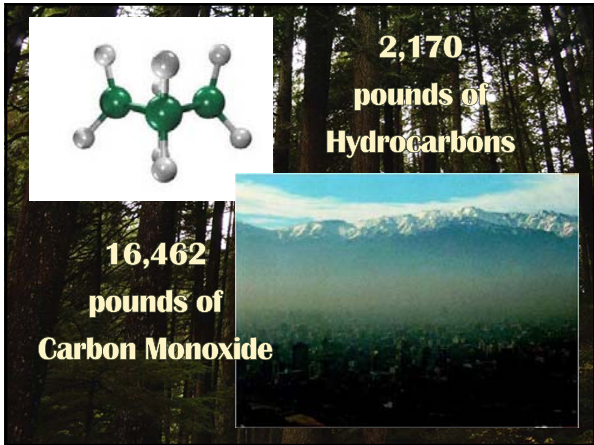
---

---

---

---

---



---

---

---

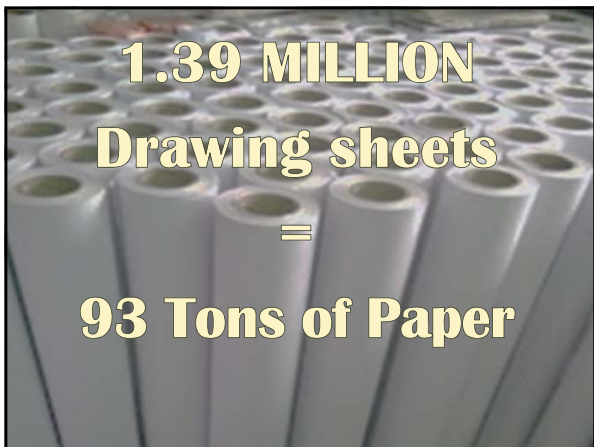
---

---

---

---

---



---

---

---

---

---

---

---

---



---

---

---

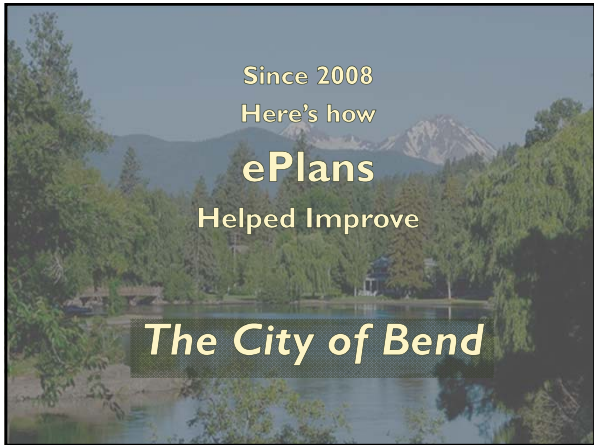
---

---

---

---

---



---

---

---

---

---

---

---

---



---

---

---

---

---

---

---

---





---

---

---

---

---

---

---

---



---

---

---

---

---

---

---

---



---

---

---

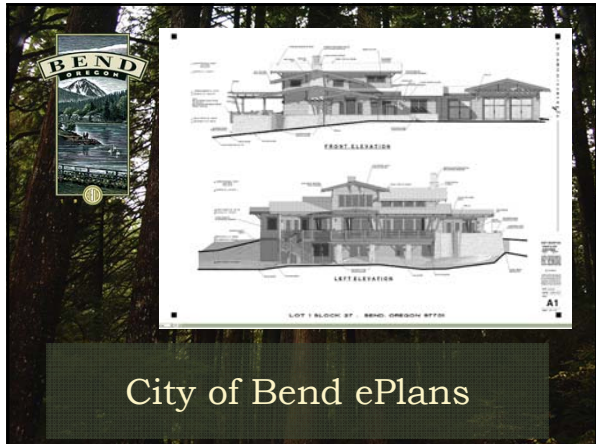
---

---

---

---

---



City of Bend ePlans

---

---

---

---

---

---

---

---