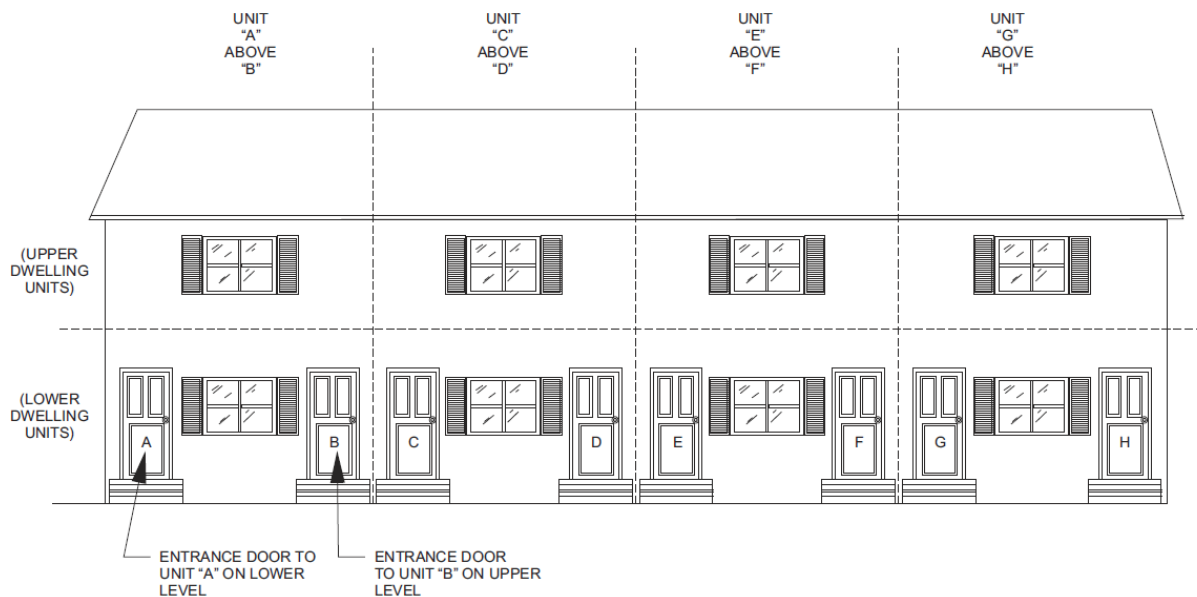


Section 202 – Definition of Townhouse

TOWNHOUSE. A single-family *dwelling unit* constructed in a group of three or more attached units in which each unit extends from foundation to roof and with a *yard* or public way on at least two sides.

Q: Can a townhouse be designed with stacked units, such as upper and lower dwelling units?

A: No. The definition for townhouse only allows single units that are completely separated from foundation to roof sheathing. If one dwelling unit were designed above a dwelling unit below, the required fire-separation walls between adjacent dwelling units could not extend between the units from the foundation to the roof sheathing. See Figure 2-26. [2-26]



MULTIPLE DWELLINGS WITH STACKED UNITS

FIGURE 2-26