

**CHANGE TYPE:** Modification

**CHANGE SUMMARY:** A new exception clearly addresses that only a single lavatory needs to be accessible within the same bathroom in a Type B unit, Option A bathroom.

**2009 STANDARD:**

### 1004 Type B Units

**1004.11.3.1 Option A.** Each fixture provided shall comply with Section 1004.11.3.1.

#### Exceptions:

1. Where multiple lavatories are provided in a single toilet and bathing area such that travel between fixtures does not require travel through other parts of the unit, not more than one lavatory is required to comply with Section 1004.11.3.1.
2. A lavatory and a water closet in a room containing only a lavatory and water closet, provided the room does not contain the only lavatory or water closet on the accessible level of the unit.

**CHANGE SIGNIFICANCE:** The addition of this exception helps to resolve a question that previously existed regarding whether a bathroom with multiple lavatories required all the fixtures to be accessible or just one. The addition of this exception continues the committee's other changes that have helped to clarify that only one of each type of fixture is required to be accessible. This issue has been discussed in other sections in this book and was clearly accepted previously for the Type A units (see Section 1003.11.2).

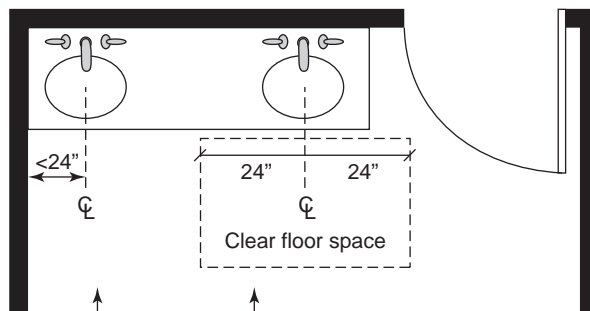
This concept of applying the accessible requirements to "one of each type of fixture" is clearly spelled out for the Type B units, Option B bathrooms in Section 1004.11.3.2. However, because the language for the Type B

## 1004.11.3.1

### Multiple Lavatories in Type B Unit, Option A Bathrooms

Type B Unit - Option A Bathroom

General requirement: Each fixture must comply with Option A requirements



Exception:  
Where multiple lavatories are provided, not more than one is required to provide a clear floor space centered on the lavatory

**1004.11.3.1 continues**

**1004.11.3.1 continued**



units, Option A bathroom requirements stated that “*each* fixture provided” had to comply, the provisions were typically imposed on both lavatories where multiple lavatories were provided.

The elimination of this requirement for multiple lavatories will help where one of the lavatories is pushed closer than 24 inches to a wall and would not allow for the clear floor space to be centered on the fixture. Alternatively, the designer could be forced to eliminate one of the lavatories, thus eliminating a design option for clients—not the best idea in master bathrooms or bathrooms shared by large families.