

**CHANGE TYPE:** Addition

**CHANGE SUMMARY:** Prohibits the use of Section 306 knee and toe clearances when establishing the clear maneuvering space required at a door. This should assure that access to door hardware is not impeded and that users do not need to reach over an obstruction to operate the hardware.

**2009 STANDARD:**

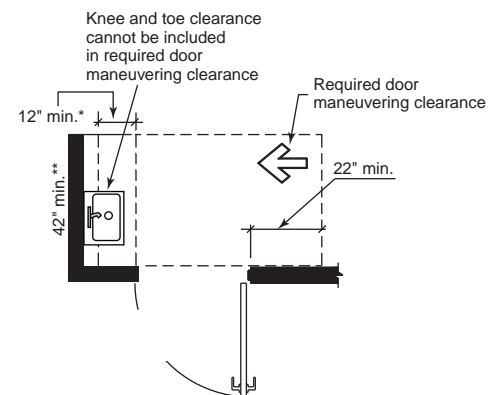
**404.2.3 Maneuvering Clearances at Doors.** Minimum maneuvering clearances at doors shall comply with Section 404.2.3 and shall include the full clear opening width of the doorway. Required door maneuvering clearances shall not include knee and toe clearance.

**CHANGE SIGNIFICANCE:** This change was developed as a part of the A117 committee's discussion related to the overlap provisions of Section 301.2. Because clearances at fixtures can include knee and toe space beneath the fixture, there was concern that an element could be located within the door maneuvering space, which would require people to reach over an obstruction and therefore could significantly impede access to the door.

The previous edition of the standard did not address whether the knee and toe clearance provisions of Section 306 were allowed to be used when establishing the maneuvering clearances at doors. The lack of a specific statement led to inconsistent application of the provisions. While an element that required a full 25-inch-depth toe clearance would cause difficulty for many people to operate the door, the minor protrusion of items that did not require but simply provided a bit of clearance beneath it would not. For example, consider a small countertop extension in the area adjacent to a door or a handrail that runs along the wall. Both of these items may project over the floor area of the maneuvering space for the door but because the depth of the protrusion is limited and there is "toe clearance" beneath the element, access to the door is probably not affected. Personally, I used the 8-inch depth from the recessed door requirements to determine what obstructions were acceptable at this location while other users accepted the full 25-inch depth or no projections at all. Regardless of previous opinion, the standard now clearly addresses that knee and toe clearance is not permitted within the door maneuvering clearances.

## 404.2.3

### Obstructions to the Maneuvering Clearances at Doors



\* If both closer and latch are provided  
\*\* 48" min. (1220) if both closer and latch provided

(e) Hinge Approach, Push Side